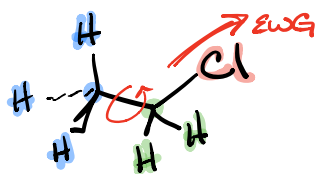


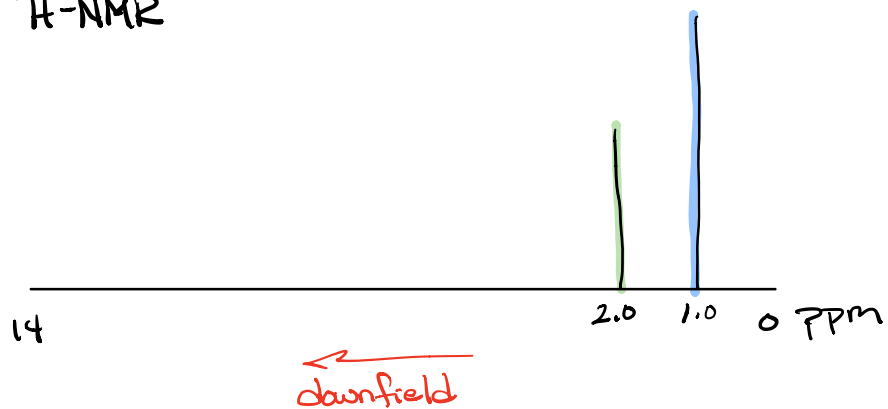
# Chemical Environments



1-chloroethane

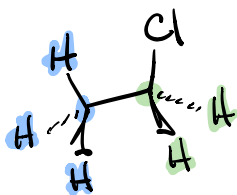
two types of hydrogen  
types = chemical environments

<sup>1</sup>H-NMR



<sup>13</sup>C-NMR

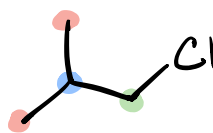
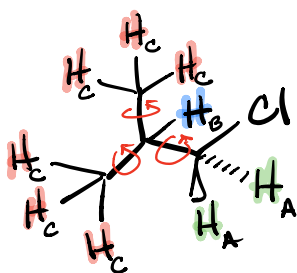




# of Chemical Environments

H 2

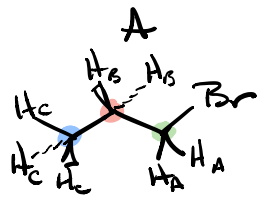
C 2



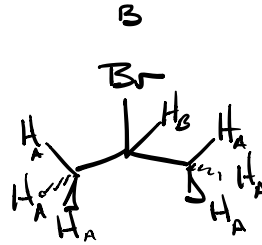
# of Chemical Environments

H 3

C 3



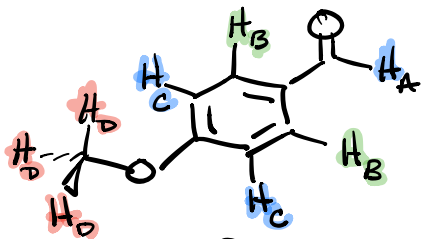
# of Environments  
3



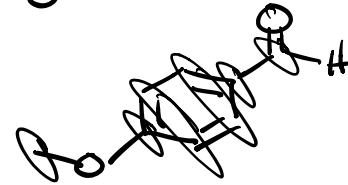
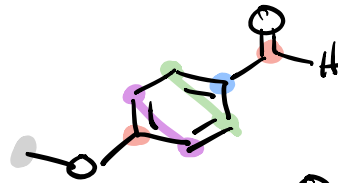
# of Environments  
2

H

C



# of Environments

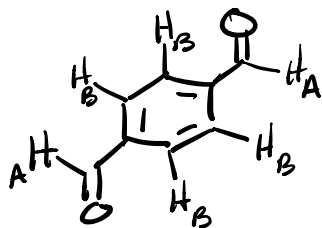


H

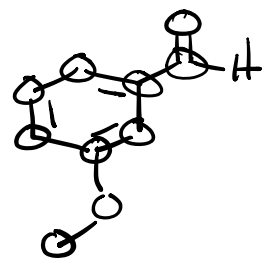
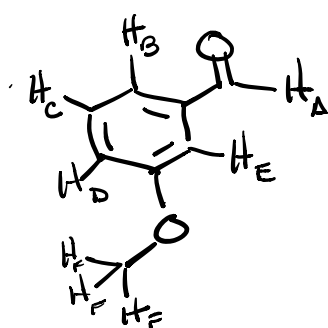
4

C

6

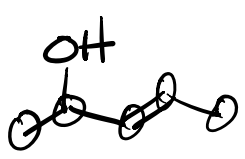
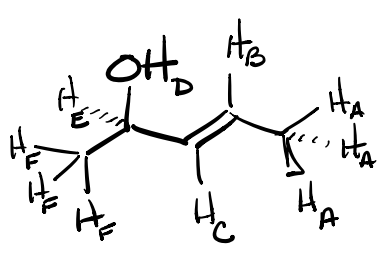


2 types of H



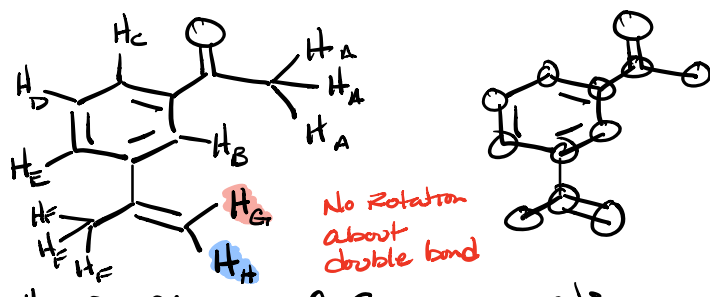
# of Environments

# 6  
C 8



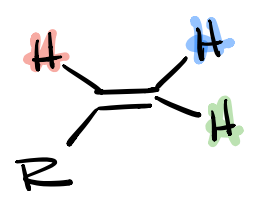
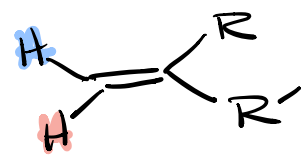
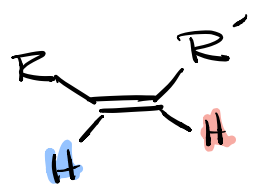
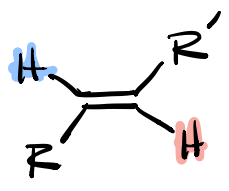
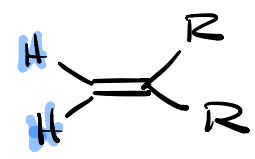
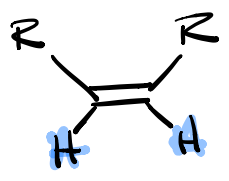
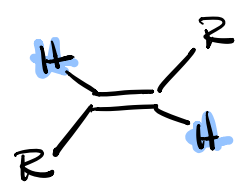
# of Environments

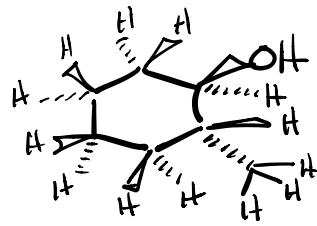
# 6  
C 5



# of Chemical Environments

H 8  
C 11 ✓





# of Environments

H

many 12-24

C

